

Axe : Axe1.2

N° profil : 4

Pk : 60.00m

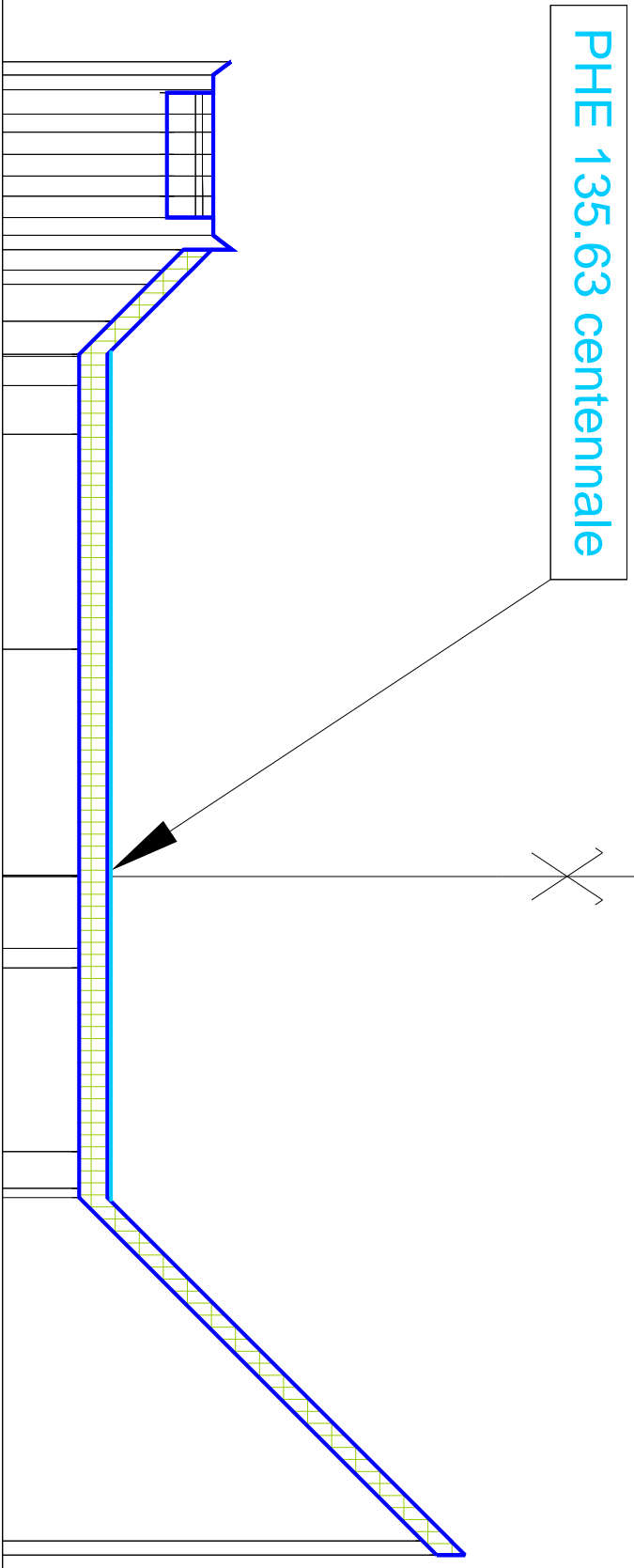
Légende décaissement :

- Terre Végétale

Section remblais : 0.02
Section déblais : 182.87

Echelle X : 1/200
Echelle Z : 1/100
Plan Comp : 134.1

Distances cumulées	Projet		Projet décaissé	
	D	Z	D	Z
-23				
-22				
-21				
-20				
-19				
-18				
-17				
-16				
-15				
-14				
-12				
-6				
0				
2				
3				
8				
9				
19				
19				



PHE 135.63 centennale

Axe : Axe2.2

N° profil : 11
Pk : 200.00m

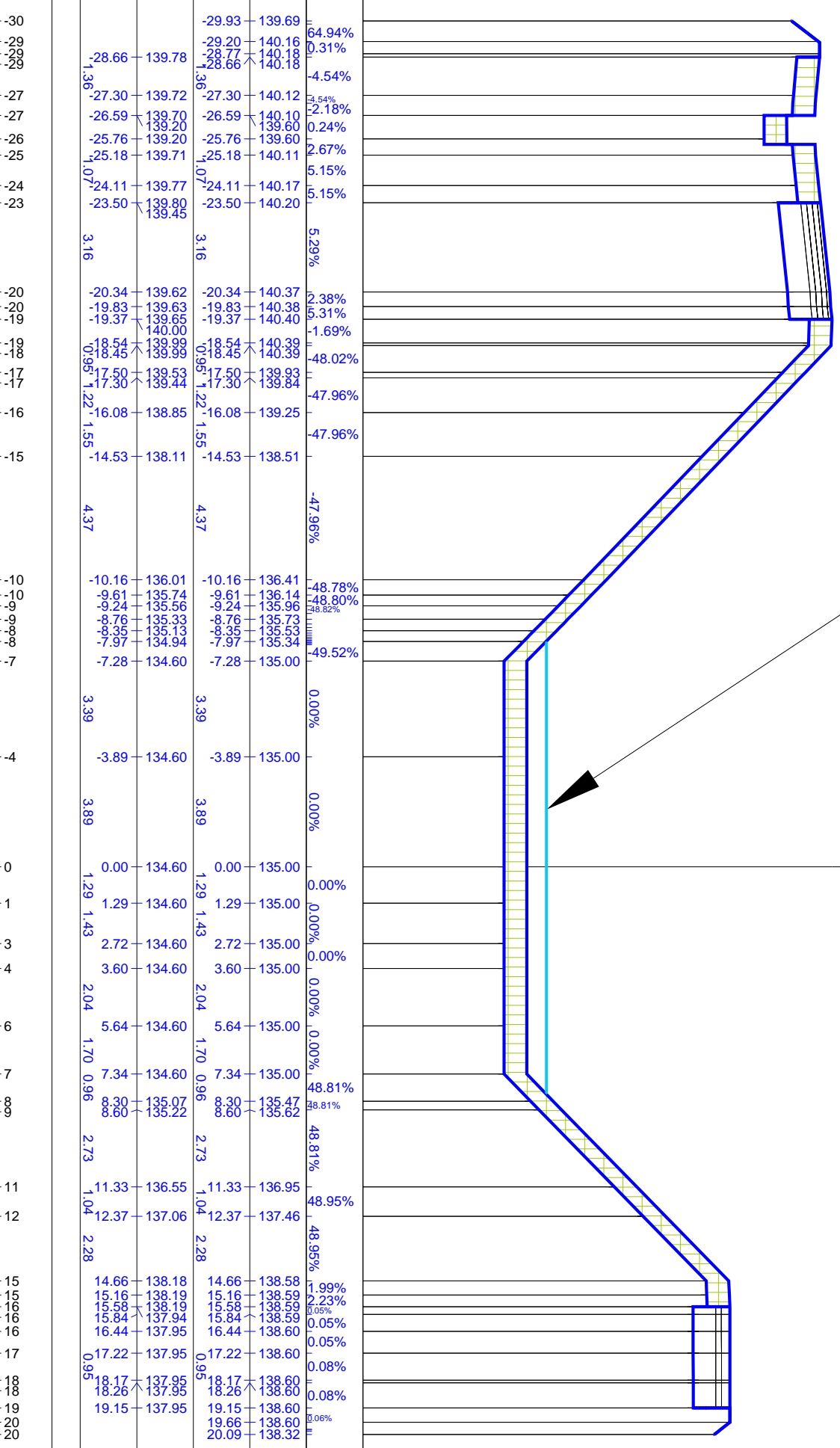
Légende décaissement :
- Terre Végétale

Section remblais : 1.86
Section déblais : 124.86

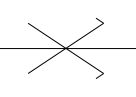
Echelle X : 1/200
Echelle Z : 1/100
Plan Comp : 132.1

Pentes plates-formes
Projet
Projet décaissé
Distances cumulées

PK	Projet (Z)	Projet (D)	Projet décaissé (Z)	Projet décaissé (D)	Distances cumulées
-30	139.69	-29.93			
-29	140.16	-29.20			
-29	140.18	-28.77			
-29	140.18	-28.66			
-27	140.12	-27.30			
-27	140.10	-26.59			
-26	139.60	-25.76			
-25	140.11	-25.18			
-24	140.17	-24.11			
-23	140.20	-23.50			
-20	140.37	-20.34			
-20	140.38	-19.83			
-19	140.40	-19.37			
-18	140.39	-18.54			
-18	140.39	-18.45			
-17	139.93	-17.50			
-17	139.84	-17.30			
-16	139.25	-16.08			
-15	138.51	-14.53			
-10	136.41	-10.16			
-10	136.14	-9.61			
-9	135.96	-9.24			
-9	135.73	-8.76			
-8	135.53	-8.35			
-8	135.34	-7.97			
-7	135.00	-7.28			
-4	135.00	-3.89			
0	135.00	0.00			
1	135.00	1.29			
3	135.00	2.72			
4	135.00	3.60			
6	135.00	5.64			
7	135.00	7.34			
8	135.47	8.30			
8	135.62	8.60			
11	136.95	11.33			
12	137.46	12.37			
15	138.58	14.66			
15	138.59	15.16			
16	138.59	15.58			
16	138.59	15.84			
16	138.60	16.44			
17	138.60	17.22			
18	138.60	18.17			
18	138.60	18.26			
19	138.60	19.15			
20	138.32	20.09			



PHE 135.35 centennale



Axe : 3.1

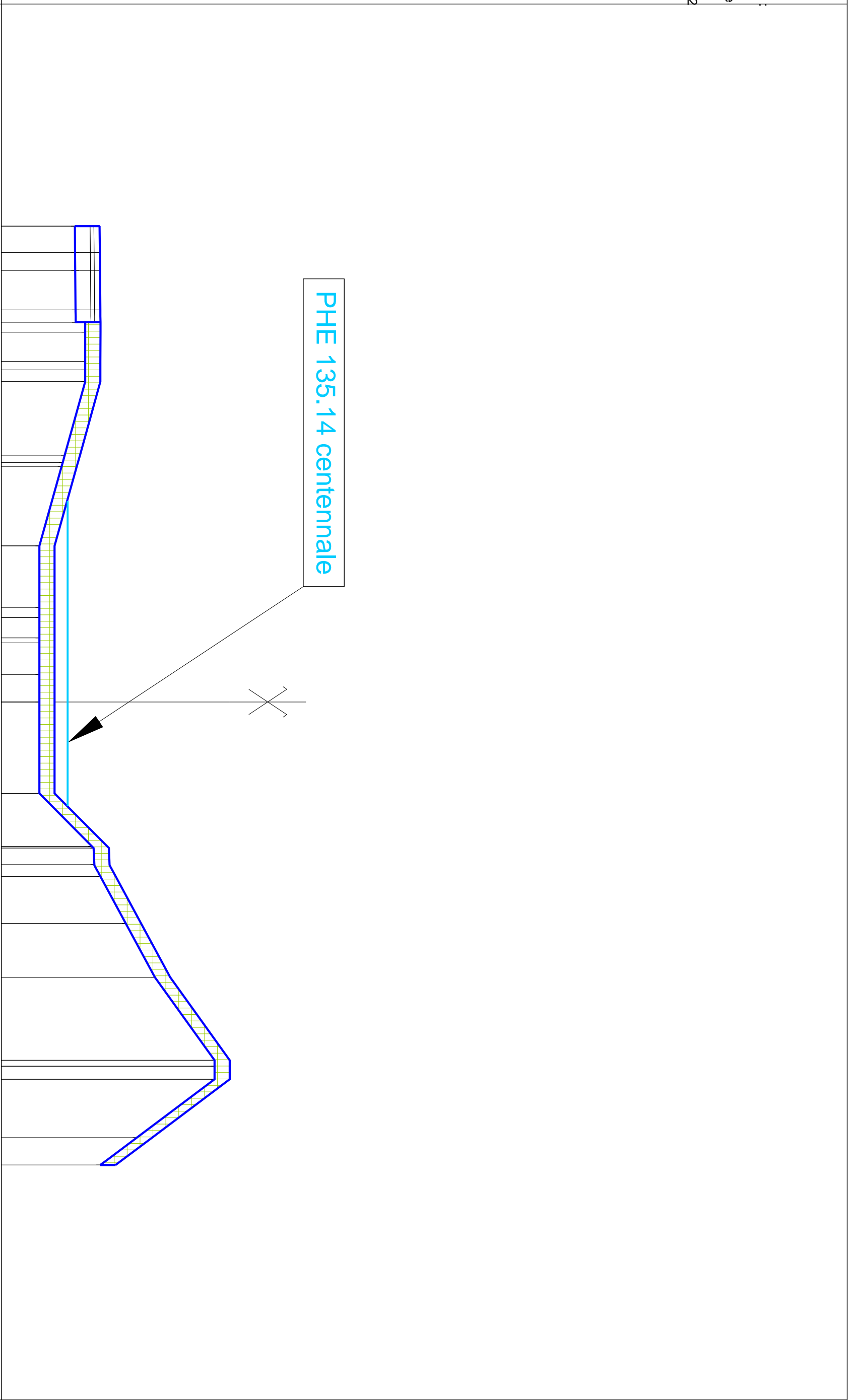
N° profil : 11
Pk : 200.00m

Légende décaissement :
- Terre Végétale

Section remblais : 23.22
Section déblais : 40.31

Echelle X : 1/200
Echelle Z : 1/100
Plan Comp : 133.4

Pentes plates-formes
Projet
Projet décaissé
Distances cumulées



Distance (m)	Projet D (m)	Projet Z (m)	Pente (%)
-25	-25.00	135.33	0.41%
-24	-23.62	135.34	0.41%
-23	-22.68	135.34	0.41%
-21	-20.59	135.35	0.76%
-20	-19.95	135.35	0.04%
-19	-19.43	135.60	-0.04%
-18	-17.90	135.60	-0.04%
-17	-17.45	135.60	-0.20%
-17	-16.83	135.60	-13.86%
-13	-12.97	135.07	-13.86%
-12	-12.38	135.01	-13.99%
-8	-8.20	134.40	0.00%
-5	-4.98	134.40	0.00%
-4	-4.43	134.40	0.00%
-3	-3.36	134.40	0.00%
-3	-3.11	134.80	0.00%
-1	-1.45	134.40	0.00%
0	0.00	134.40	0.00%
5	4.81	134.40	0.00%
8	7.60	135.79	49.65%
8	7.68	135.82	2.22%
9	8.56	135.84	27.02%
9	9.17	136.00	27.02%
12	11.64	136.67	27.02%
14	14.46	137.43	27.02%
19	18.82	139.00	35.84%
19	19.14	139.00	0.01%
20	19.82	139.00	0.01%
23	22.89	136.95	-66.58%
24	24.33	136.00	-66.58%

Axe : 4.1

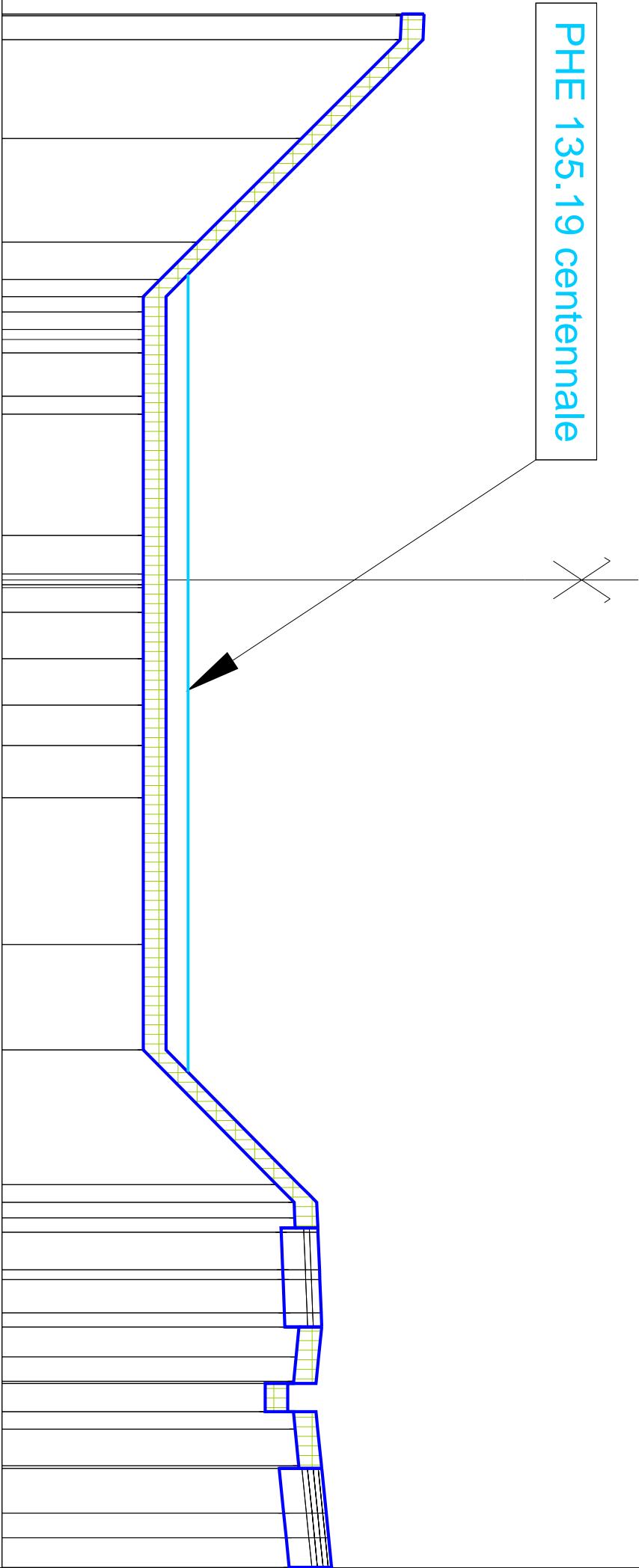
N° profil : 11
Pk : 200.00m

Légende décaissement :
- Terre Végétale

Section remblais : 0.09
Section déblais : 214.79

Echelle X : 1/200
Echelle Z : 1/100
Plan Comp : 131.9

Distances cumulées	Projet décaissé		Projet		Pentes plates-formes
	D	Z	D	Z	
-20	-20.02	138.96	-20.02	139.36	-2.25%
-20	-19.96	138.96	-19.96	139.36	-49.99%
-19	-19.12	138.94	-19.12	139.34	-49.99%
	3.50		3.50		
-16	-15.62	137.19	-15.62	137.59	-49.99%
	3.66		3.66		
-12	-11.95	135.36	-11.95	135.76	-49.99%
-11	-10.63	134.70	-10.63	135.10	-49.46%
-10	-10.03	134.40	-10.03	134.80	0.00%
-9	-9.49	134.40	-9.49	134.80	0.00%
-8	-8.86	134.40	-8.86	134.80	0.00%
-8	-8.51	134.40	-8.51	134.80	0.00%
-8	-8.04	134.40	-8.04	134.80	0.00%
-7	-6.50	134.40	-6.50	134.80	0.00%
-6	-5.87	134.40	-5.87	134.80	0.00%
	4.29		4.29		0.00%
-2	-1.58	134.40	-1.58	134.80	0.00%
0	-0.21	134.40	-0.21	134.80	0.00%
0	0.17	134.40	0.17	134.80	0.00%
1	0.27	134.40	0.27	134.80	0.00%
1	1.15	134.40	1.15	134.80	0.00%
	1.64		1.64		0.00%
3	2.79	134.40	2.79	134.80	0.00%
	1.64		1.64		0.00%
4	4.43	134.40	4.43	134.80	0.00%
	1.43		1.43		0.00%
6	5.86	134.40	5.86	134.80	0.00%
	1.85		1.85		0.00%
8	7.71	134.40	7.71	134.80	0.00%
	1.85		1.85		0.00%
	5.20		5.20		0.00%
13	12.90	134.40	12.90	134.80	0.00%
	3.72		3.72		0.00%
17	16.62	134.40	16.62	134.80	49.34%
	4.77		4.77		49.34%
21	21.39	136.75	21.39	137.15	29.37%
22	22.02	137.06	22.02	137.46	29.44%
23	22.57	137.08	22.57	137.48	2.19%
23	23.08	136.84	23.08	137.49	2.19%
	1.33		1.33		1.97%
24	24.41	136.86	24.41	137.51	1.97%
25	24.75	136.87	24.75	137.52	1.97%
26	25.93	136.89	25.93	137.54	1.97%
26	26.43	136.90	26.43	137.55	1.97%
	1.06		1.06		-5.04%
27	27.49	137.10	27.49	137.50	-5.04%
	1.06		1.06		-5.04%
28	28.36	137.06	28.36	137.46	30.03%
28	28.43	137.05	28.43	137.45	-0.03%
	1.00		1.00		-0.03%
29	29.43	136.55	29.43	136.95	4.97%
30	30.05	137.08	30.05	137.48	4.97%
	1.29		1.29		4.97%
31	31.34	137.15	31.34	137.55	5.04%
31	31.43	137.15	31.43	137.55	5.04%
	1.59		1.59		5.04%
33	33.02	136.88	33.02	137.63	5.04%
34	33.89	136.93	33.89	137.68	5.03%
	1.0		1.0		5.03%



PHE 135.19 centennale